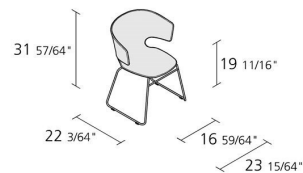
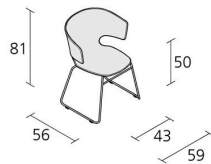


Alias

TAORMINA CHAIR / 504

Alfredo Häberli

Armchair with structure in stove enamelled or chromed steel. Seat and back in solid plastic material padded with CFC free expanded polyurethane foam, removable cover in fabric, synthetic-leather or in leather. Also available in stacking version.



INFORMATION



Warranty 10 years



Fire-retardancy
(some parts only)



Recyclable



Removable covers



5

Max number of
chairs for stacking



1

Boxes number



1

Max number pieces
per a box



0,409

Volume in m³



11

Gross weight in Kg

FINISHES TAORMINA CHAIR / 504

CHROMED STEEL



CR

STOVE ENAMELLED STEEL



A011

A019

A047

STOVE ENAMELLED ALUMINIUM



A009

A016

WOOD



RV

RVT

RC

COLOURED STAINS



V131

V140

V142

LEATHER PELLE FRAU® COLOR SYSTEM



B004

B006

B026

B030

B056

B057

B080

KVADRAT® CANVAS (EXAMPLES)



174

424

964

KVADRAT® DIVINA



DA28

DA45

DA48

KVADRAT® FOSS (EXAMPLES)



112

192

612

KVADRAT® HALLINGDAL 65 (EXAMPLES)



HG06 HG14 HG24

KVADRAT® HERO (EXAMPLES)



151 511 931

KVADRAT® STEELCUT (EXAMPLES)



SC01 SC02 SC03

KVADRAT® STEELCUT TRIO (EXAMPLES)



ST24 ST25 ST28

KVADRAT® TONUS (EXAMPLES)



KN04 KN05 KN09

KVADRAT® UMAMI (EXAMPLES)



111 551 721

KVADRAT® UMAMI 2 (EXAMPLES)



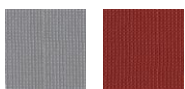
212 512 532

KVADRAT® UMAMI 3 (EXAMPLES)



143 353 973

CAMIRA® URBAN (EXAMPLES)



YN094 YN027

CAMIRA® XTREME (EXAMPLES)



YS141

SYNTHETIC LEATHER STAMSKIN® TOP (EXAMPLES)



07422



07454



07458