

# Alias

---

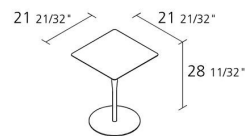
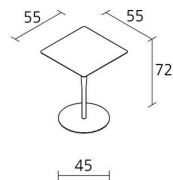
## ATLAS TABLE / E

*Jasper Morrison*

Tavolino con base tonda in acciaio verniciato, spessore 8 mm, e gamba in acciaio conificato verniciato. Piano:

- alluminio con laminato, sp. 6 mm
- stratificato Full Color, sp. 12 mm

SU RICHIESTA: disponibile anche in alluminio impiallacciato acero, rovere sbiancato, noce canaletto sp. 6 mm.



# INFORMATION

Numero colli

3

Numero colli

Numero massimo per collo

1

Numero massimo  
per collo

Volume in m<sup>3</sup>

0,103

Volume in m<sup>3</sup>

Peso lordo in Kg singolo pezzo

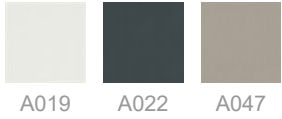
20

Peso lordo in Kg  
singolo pezzo

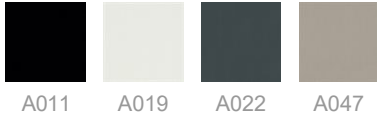
---

# FINITURE ATLAS TABLE / E

## ACCIAIO VERNICIATO



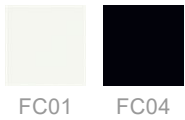
## ALLUMINIO & ACCIAIO



## LAMINATO



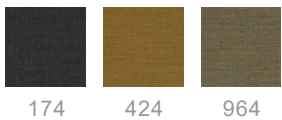
## FULL COLOR



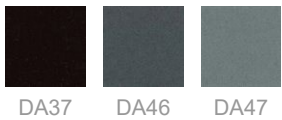
## FULL COLOR VERNICIATO



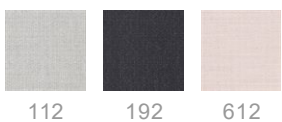
## KVADRAT® CANVAS (EXAMPLES)



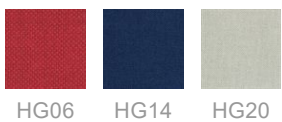
## KVADRAT® DIVINA (EXAMPLES)



## KVADRAT® FOSS (EXAMPLES)



## KVADRAT® HALLINGDAL 65 (EXAMPLES)



### KVADRAT® HERO (EXAMPLES)



181 511 931

### KVADRAT® STEELCUT (EXAMPLES)



SC01 SC02 SC03

### KVADRAT® STEELCUT TRIO (EXAMPLES)



ST24 ST25 ST28

### KVADRAT® TONUS (EXAMPLES)



KN02 KN03 KN04

### KVADRAT® UMAMI (EXAMPLES)



111 551 721

### KVADRAT® UMAMI 2 (EXAMPLES)



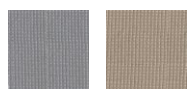
122 332 982

### KVADRAT® UMAMI 3 (EXAMPLES)



143 653 973

### CAMIRA® URBAN (EXAMPLES)



YN094 YN108

### CAMIRA® XTREME (EXAMPLES)



YS141 YS108